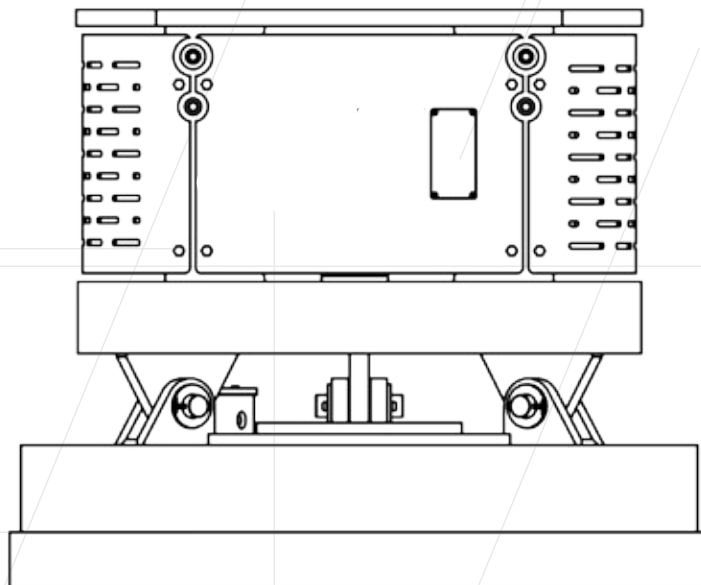




Plant Service Ltd

Lifting magnets M14



Lifting magnets

Overview of the differences

- warranty
- Drive motor (axial piston motor up to 400bar)
- Generator
- M8
- M14
- M15
- M16
- M19
- M22

Standard

Premium

24 months
12 ccm
9 kW

36 months
25 ccm
13 kW



Environmentally friendly

- internal leakage oil return



Easy handling:

- compact construction, integrated power supply
- no additional installation on excavator needed
- magnet pendulum with parking device
- remote control
- multi-functional status display



Easy maintenance:

- maintenance- free components
- fourfold protection against short- circuit and overload
- vibration resistant and shake-proof
- parametrized digital generator governor
- plug & play: plug-gable connections for easy commissioning and service



Generator :

- brush-less, robust synchronous generator
- housing made of corrosion- free alloys
- dirty resistant housing/ special profile
- up to 25% shorter cycle times in
- maximum efficiency.
- protection class IP 65
- wear-free electronics



Standard Premium

Hydraulic

Automatic regulation of pressure in the system due to intelligent valve unit.

- vibration free and stable hydraulic drive.
- Emergency running properties (in the event of an abrupt oil cut-off)
- hydraulic motor (axial piston motor up to 400bar)
- high speed range
- smooth operation across the entire speed range
- High efficiency
- suitable for applications with high angular accelerations due to its high torsional strength



chassis:

- louvres for better cooling
- reinforcement for more stability
- stiffening tube for more stability



Elektronic :

Safely through self-protective electronics :

- Protection against short circuit , loose contact and interruption
- overload
- over temperature
- lower and over speed
- waterproof protected against weather



Easy and efficient control:

- simple hydraulic connection (hammer hydraulics)
- Thorough clamshell angular momentum or due to remote control
- Clear and fast on- board- diagnosis.
- Fast and precise localization in case of disturbances.
- Flash code for remote diagnosis.



Intelligent control:

- automatic self-adjustment to various magnetic disk sizes
- extensive diagnostic capability
- vibration-free and stable hydraulic



Lifting magnets

Standard Premium

Advantages of magnet plates:

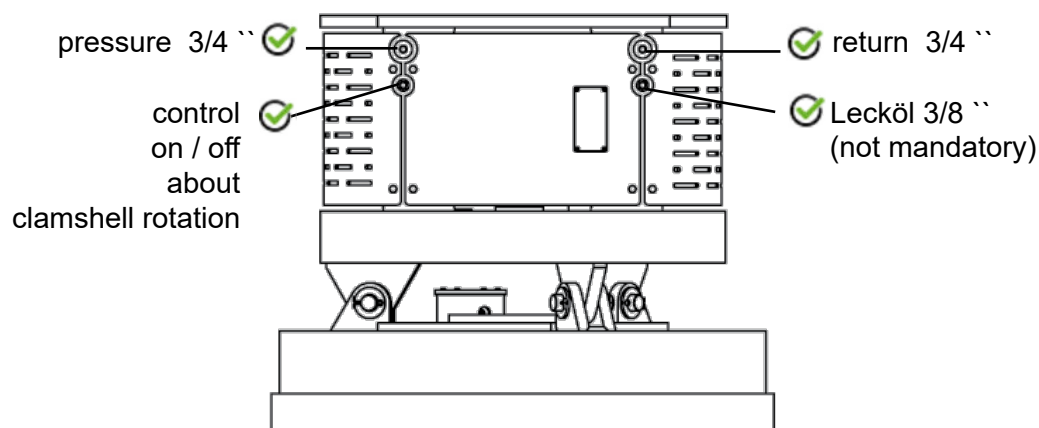
- Hermetically closed steel housing shake-proof and wear- resistant
- vibrations and abrasion
- Magnetic circuit protected against external influences and moisture.
- optimal weight- performance ratio guarantees maximum handling easy.
- Temperature equalisation due to steel surface.
- cable protection



Operation of magnet plates:

No special maintenance needed except from periodic checking of electric connections, suspension connections and housing.

Connection for hydraulic comonents - Premium



Setting/ regulation of hydraulic:

Therefore no precise hydraulic setting needed

Setting details	M8 - M22
amount of oil	90 - 250 litres
operating pressure	200 - 350 bar
back pressure max.	> 30 bar
leakage oil max.	> 10 bar

recommended setting	M8 - M22
amount of oil	140 litres
operating pressure	> 250 bar
back pressure	> 20 bar
leakage oil	> 10 bar

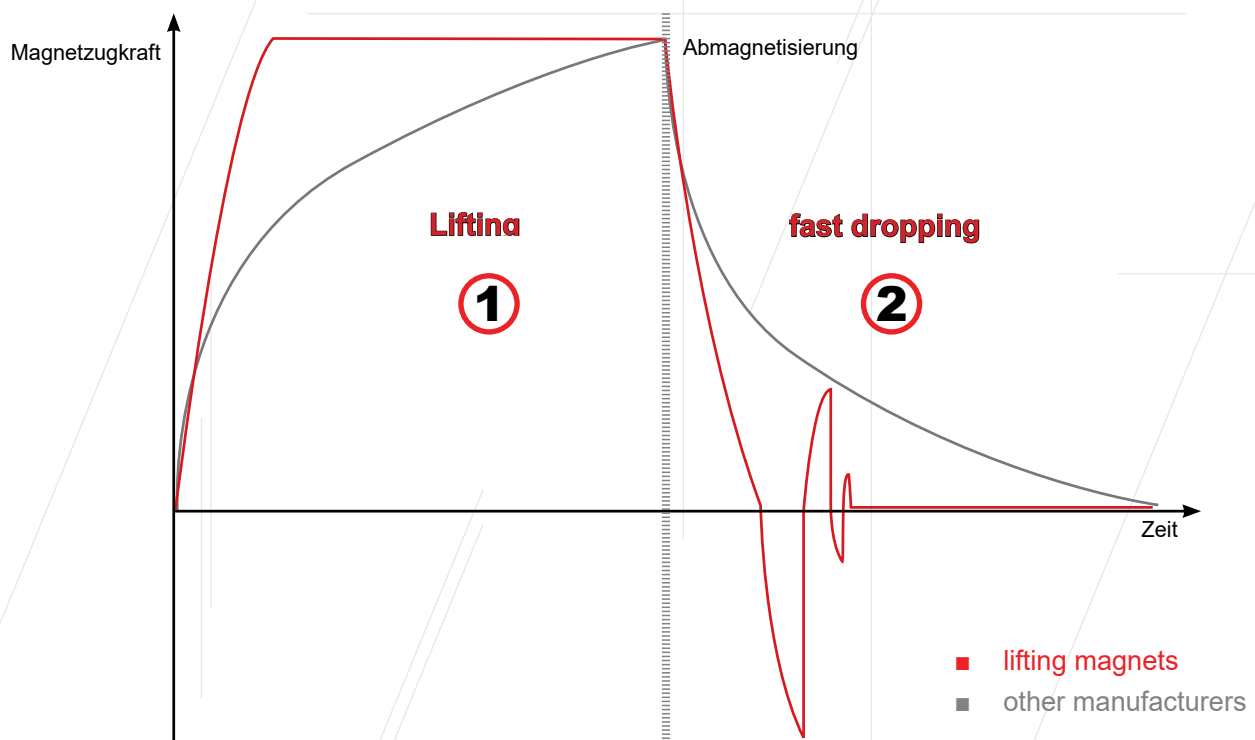
■ Lifting magnets advantage

① Efficient lifting with voltage surge

To work even more efficient, the generator use a special technique. Due to a higher cut- in voltage the magnet picks up more material, before holding voltage is adjusted automatically. Therefore more material is loaded faster an safer. As a consequence this technology saves working time, wearing and fuel.

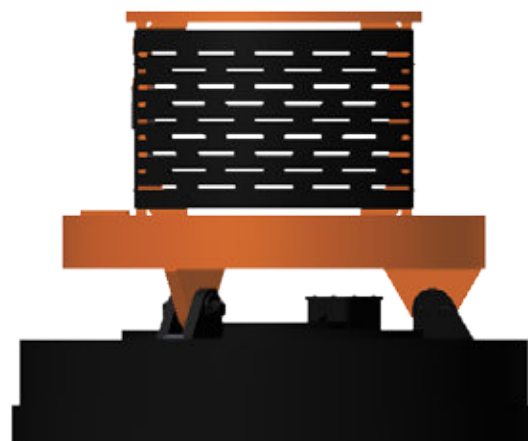
② Variable demagnetization phase optimizes dropping

Time and strength of demagnetisation determine the dropping of the magnet. The generators adjust these factors perfectly to the performance of the magnet. Thereby a faster turn on is possible too. After demagnetisation the magnet is completely clean (no chips, pipes, plates or mixed scrap).



Lifting magnets Standard - Premium

M14S Rigid version (S) standard - premium



Technical details standard

M 14

operating weight (t)	12 - 30
weight without head plate(kg)	1.360
total height (mm)	1.017
total diameter (mm)	1.060
magnet plate kW	MP 8 5,5
generator power (kW)	9

Technical details premium

M 14

operating weight (t)	12 - 30
weight without head plate(kg)	1.360
total height (mm)	1.017
total diameter (mm)	1.060
magnet plate kW	MP 8 5,5
generator power (kW)	13

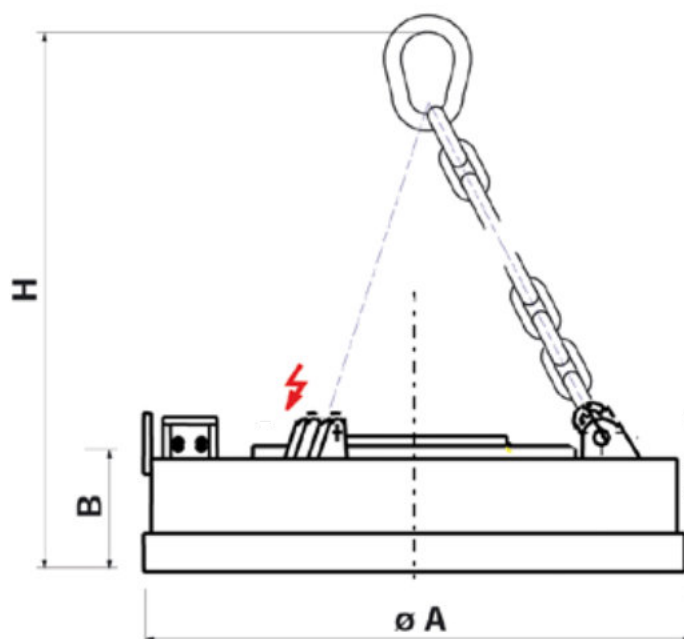
Lifting magnets extras for all types

also available with 3 - 5 teeth

360 ° rotatable - version (R)

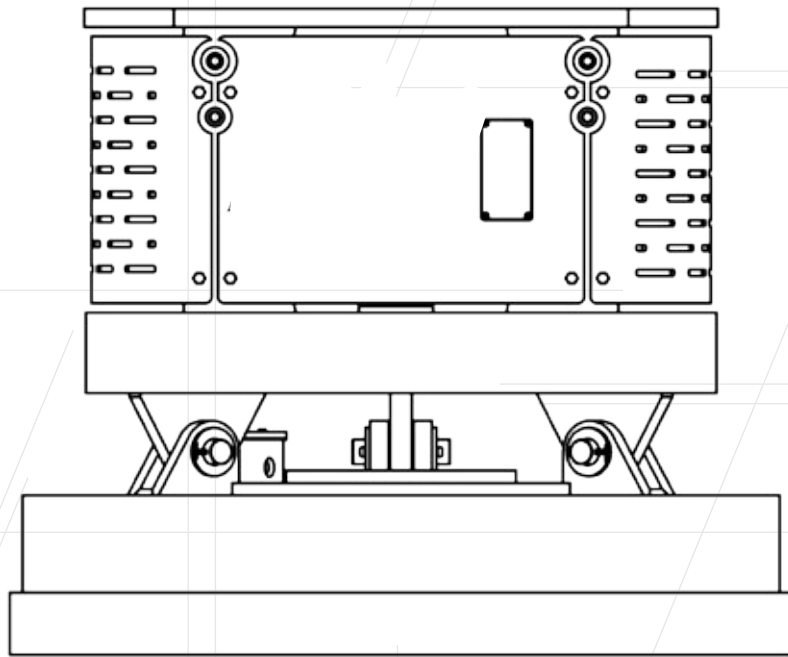
Magnet plates

Due to special construction of magnet plate a better depth effect is achieved.
Magnet plate is made of wear- resistant material which lead to longer lifetime.



Technical details	MP 8
weight (kg)	780
dimension A (mm)	1.060
dimension B (mm)	280
dimension H (mm)	975
Ø magnet (mm)	1.060
mains voltage (Vgs)	220
magnet power (kW)	5,5
with air gap Ø /300 ¹ Tensile strength (kg)	11.500
load capacity ¹ slab blocks (kg)	5.750
load capacity ¹ bullets capacity (kg)	2.600
load capacity ¹ iron pig (kg)	280
load capacity ¹ Scrap 3A 2,2÷2, 5 T/m3 (kg)	255
load capacity ¹ Scrap 24 1,9÷2,0 T/m3 (kg)	240
load capacity ¹ Scrap 40 0,8÷1, 0 T/m3 (kg)	120
Lifting magnets	M14

¹ According to VDE 0580. Defined in 5 hours from changing labor (50%), at ambient temperature of 20°C.



Mutley

Plant Service Ltd

www.mutley.co.uk

01304 840621